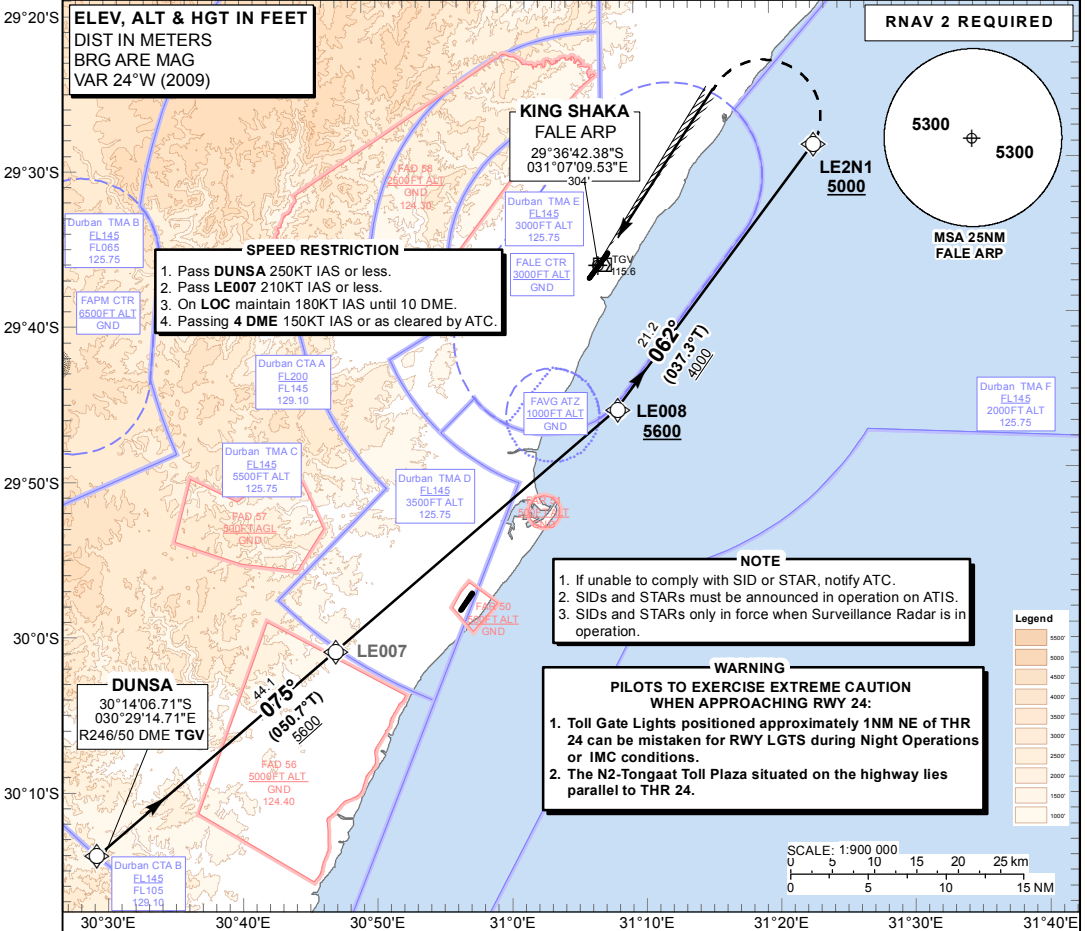


**STANDARD ARRIVAL  
CHART -  
INSTRUMENT  
(STAR)**

TRANSITIONAL ALTITUDE  
**5500'**  
TRANSITIONAL LEVEL  
**ATC**

RADAR APP: 125.75  
TWR: 118.45  
GND: 121.65  
ATIS: 127.00

**DURBAN**  
(KING SHAKA INTERNATIONAL)  
**RNAV (GNSS) RWY 24**  
**DUNSA 1B**

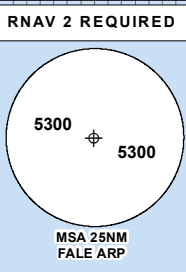


**ELEV, ALT & HGT IN FEET**  
DIST IN METERS  
BRG ARE MAG  
VAR 24°W (2009)

**SPEED RESTRICTION**

1. Pass **DUNSA** 250KT IAS or less.
2. Pass **LE007** 210KT IAS or less.
3. On **LOC** maintain 180KT IAS until 10 DME.
4. Passing **4 DME** 150KT IAS or as cleared by ATC.

**KING SHAKA  
FALE ARP**  
29°36'42.38\"S  
031°07'09.53\"E



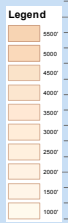
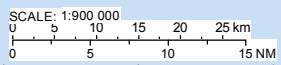
**NOTE**

1. If unable to comply with SID or STAR, notify ATC.
2. SIDs and STARs must be announced in operation on ATIS.
3. SIDs and STARs only in force when Surveillance Radar is in operation.

**WARNING**

**PILOTS TO EXERCISE EXTREME CAUTION  
WHEN APPROACHING RWY 24:**

1. Toll Gate Lights positioned approximately 1NM NE of THR 24 can be mistaken for RWY LGTS during Night Operations or IMC conditions.
2. The N2-Tongaat Toll Plaza situated on the highway lies parallel to THR 24.



**DUNSA 1B:  
RWY 24**

Leave **DUNSA** for **LE008**. At **LE008** turn left proceeding to **LE2N1** for radar vectors onto the ILS LOC RWY 24 and land.

**COMMUNICATION FAILURE PROCEDURE (Squawk 7600)**

**Before DUNSA:** Proceed to **DUNSA** and comply with the "**After DUNSA**" Communication Failure Procedure.

**After DUNSA:** Continue on the **DUNSA 1B** RNAV (GNSS) STAR maintaining last assigned level. Passing **LE007** descend to FL080. At **LE008** (not below 5600' ALT) turn left to **LE2N1** and continue with the RNAV (GNSS) RWY 24 APCH and intercept the ILS LOC RWY 24 and land RWY 24.

In the event of a missed approach with the intention of diverting to an alternate aerodrome, proceed as follows: Comply with the **OKTAN 1A** RNAV (GNSS) SID. At **OKTAN** continue to the diversion aerodrome.

CHANGE: New Format